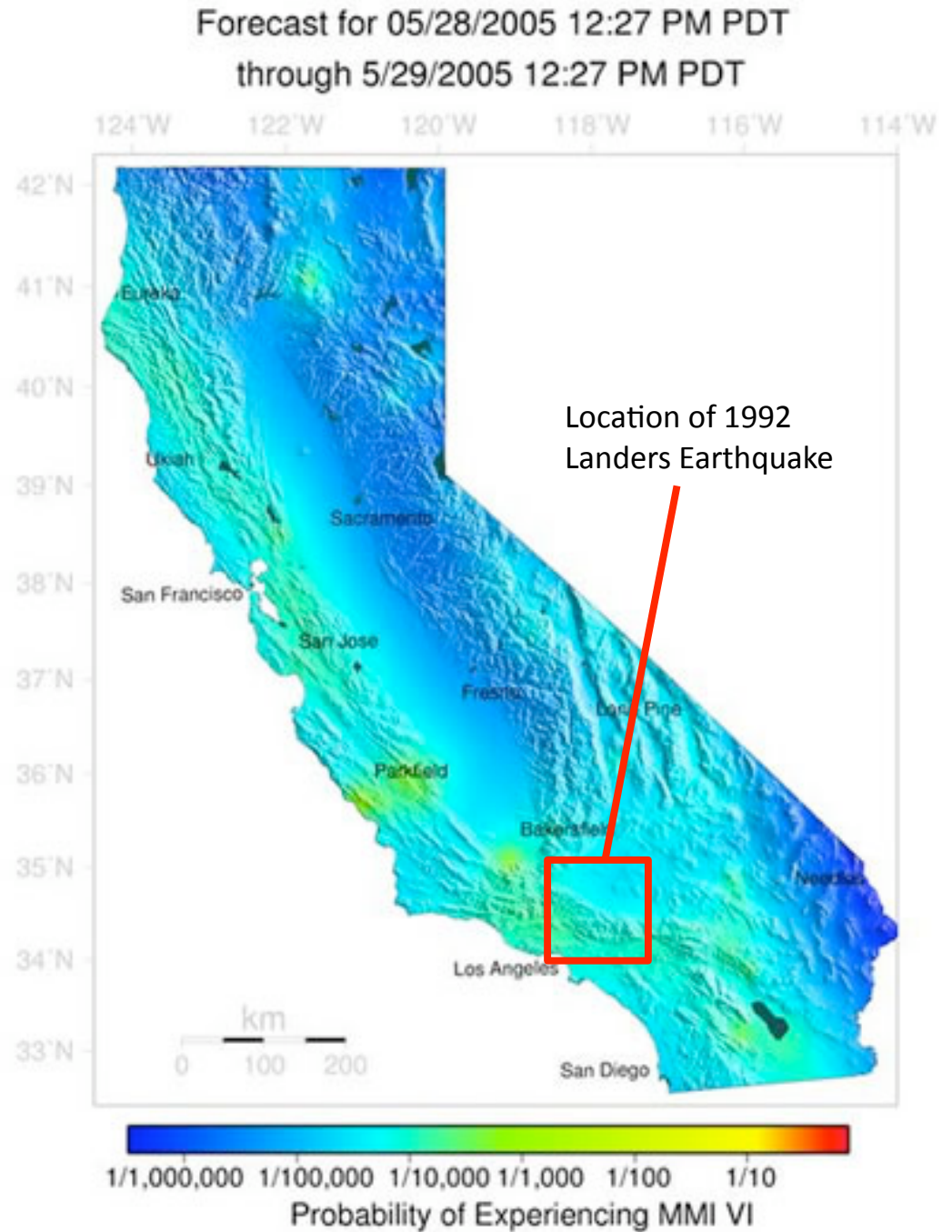
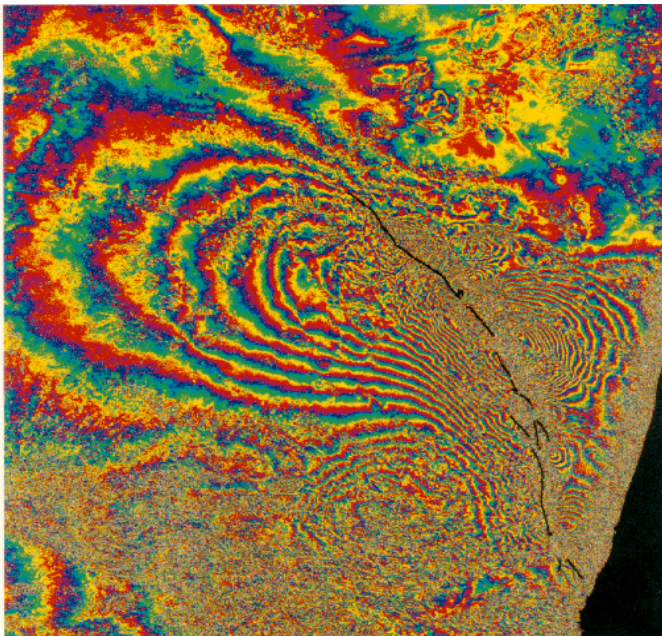
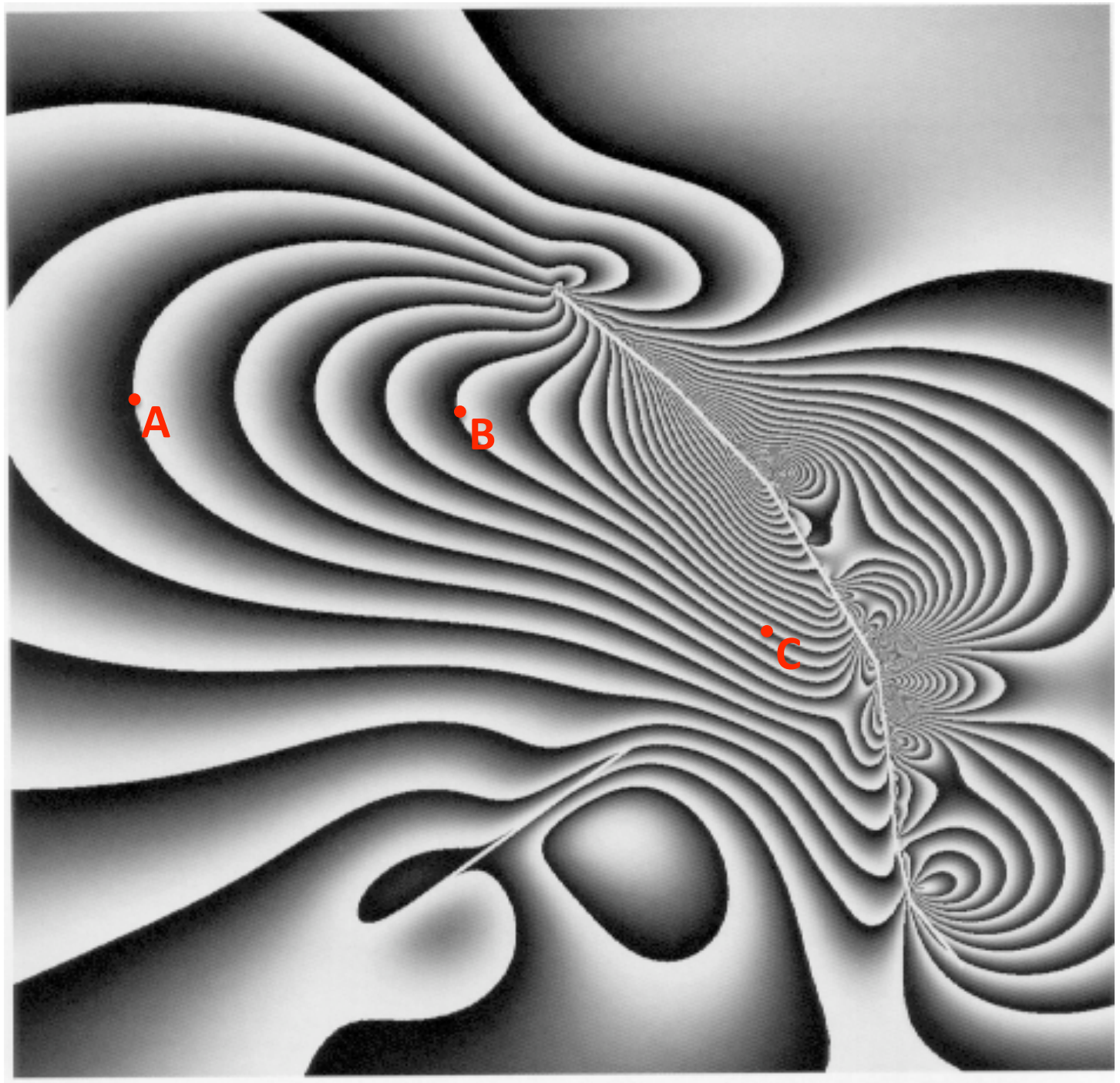


SAR Interferometry

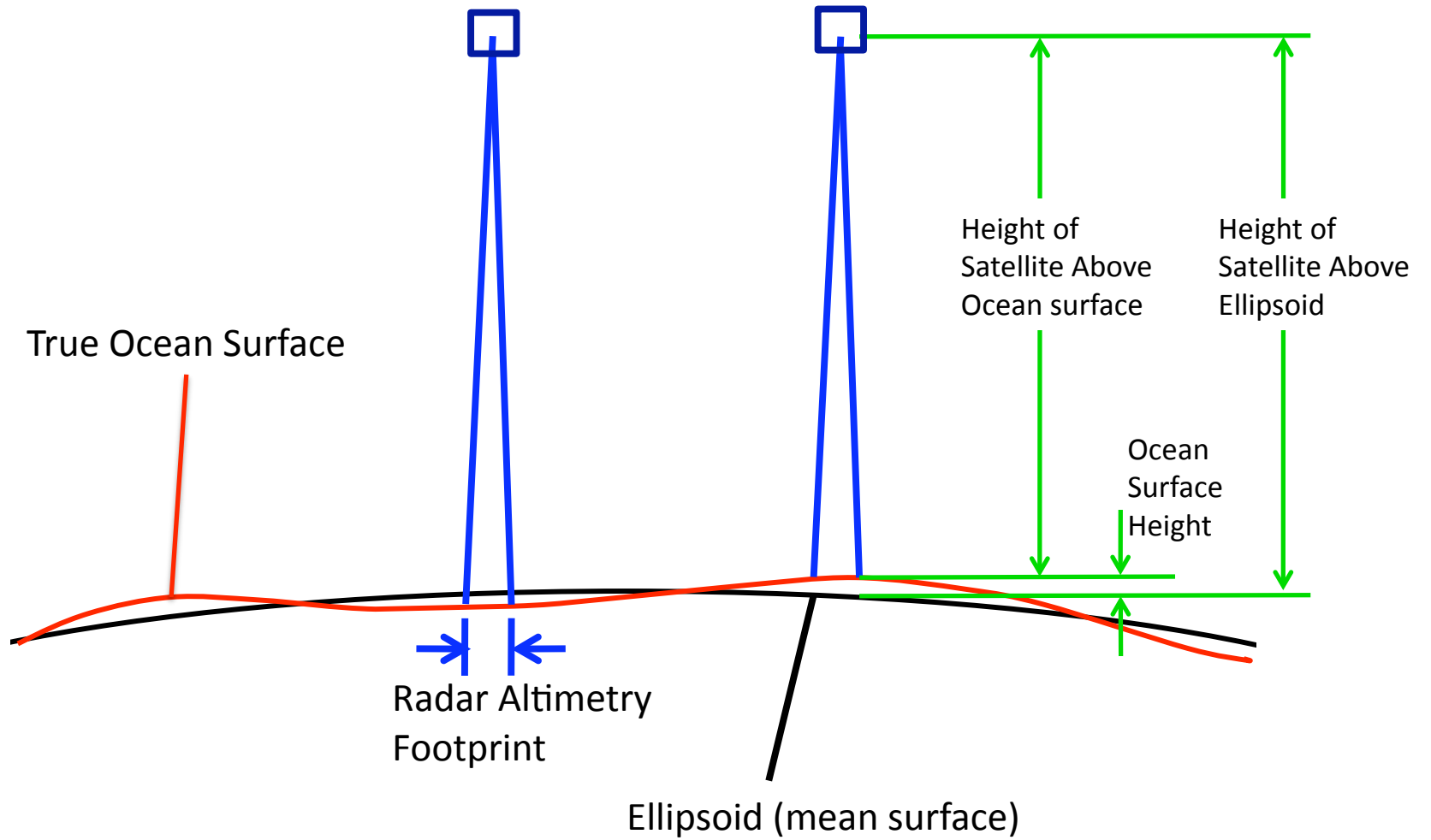
The magnitude 7.3 Landers earthquake of 28 June 1992 ruptured over 85 km along a complex fault system in the Mojave Desert of California. The Landers earthquake sequence provided an ideal test case for radar interferometry, because its shallow depth produced spectacular surface rupture in an arid area less than three months after the ERS-1 satellite began acquiring radar images in its 35-day orbital cycle.

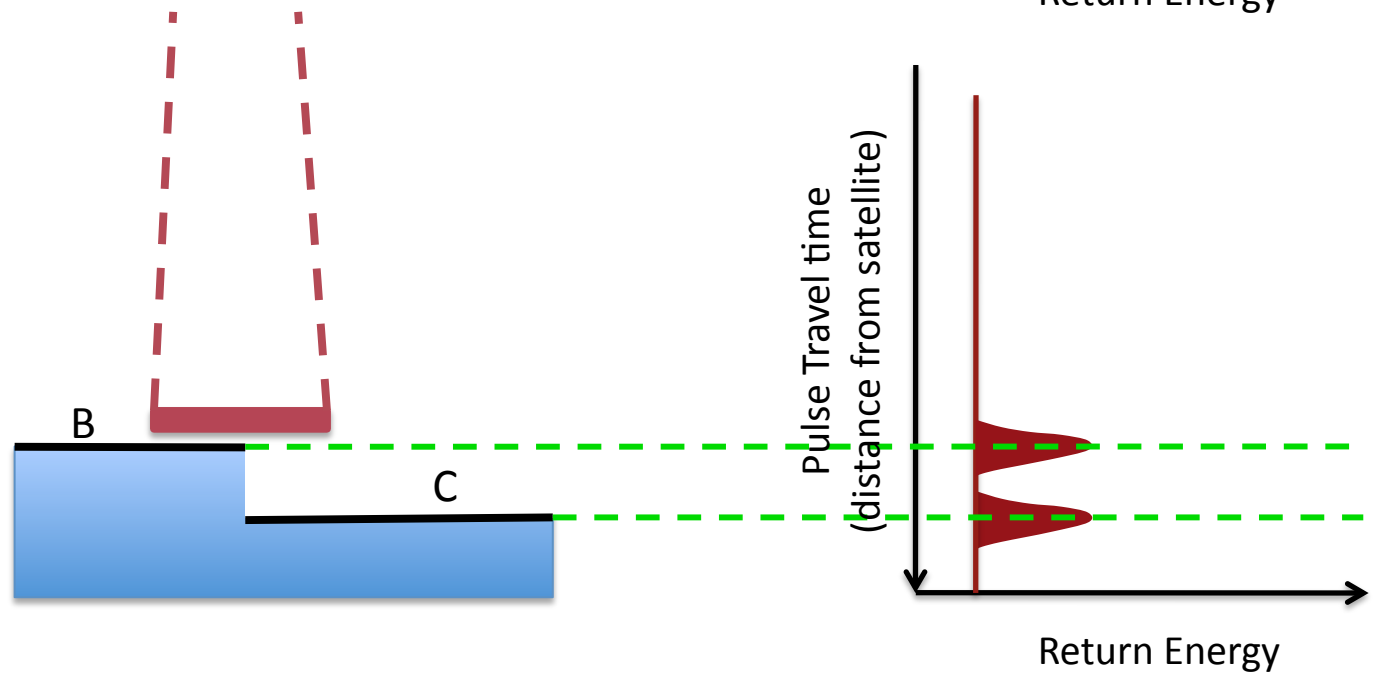
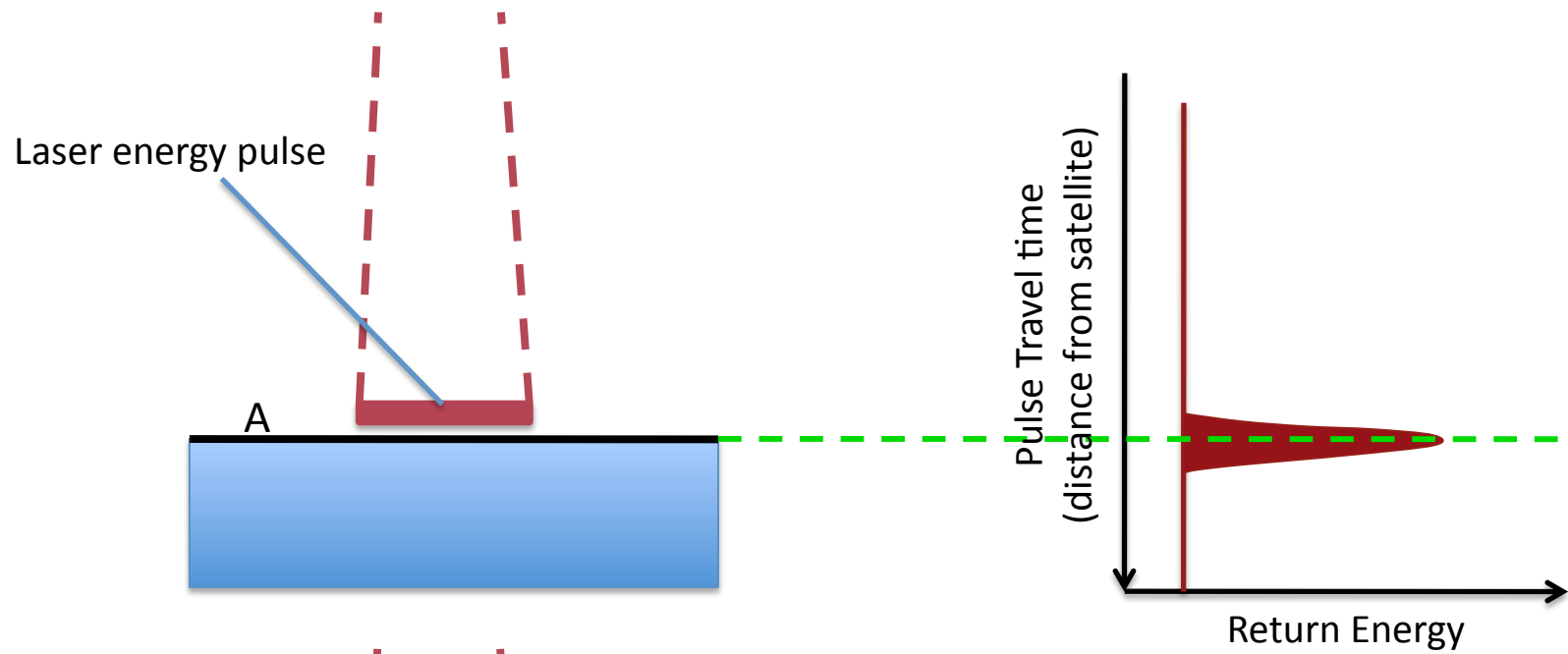


Model-
generated
smoothed
version
of 1992
Landers
Earthquake
ERS-1
Interferogram



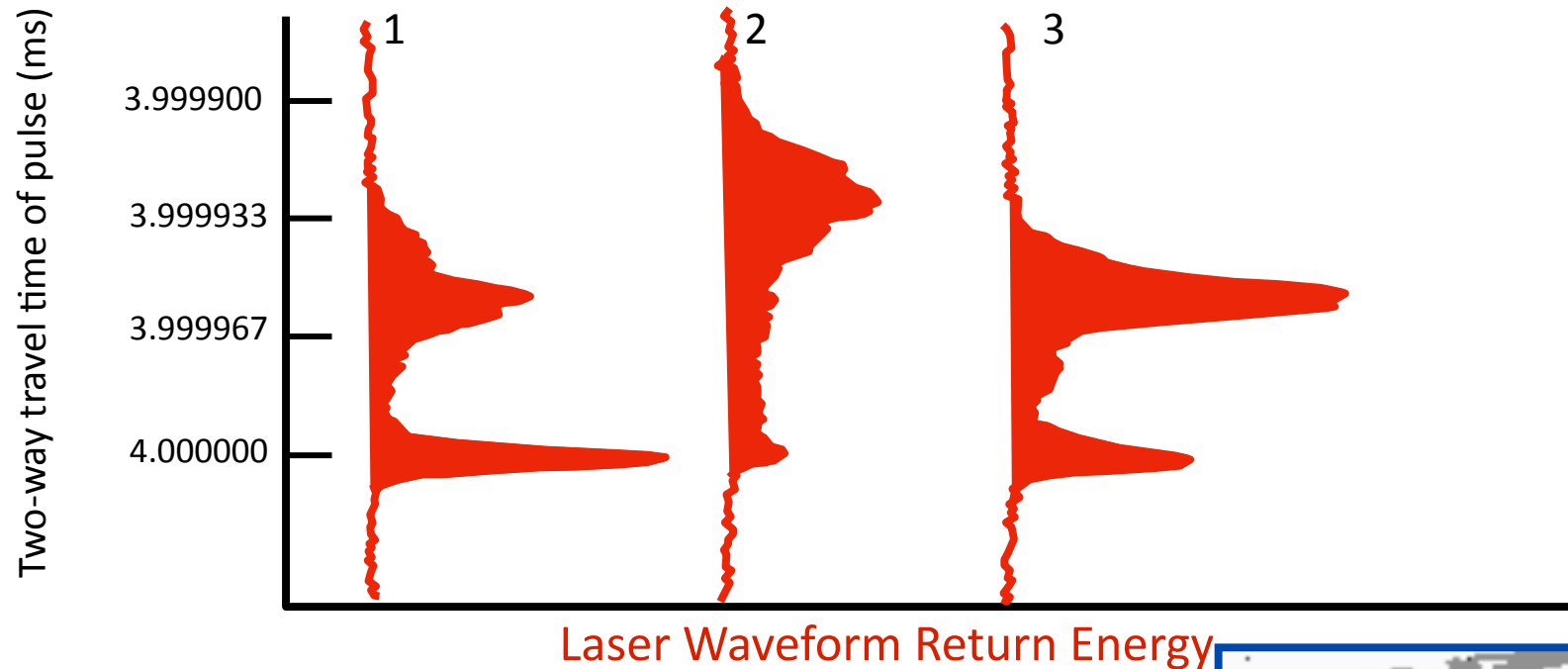
Ocean Radar Altimetry





ICESat Laser Altimetry Over Boreal Forest

Three Representative Laser Return Pulse Waveforms



Canopy Height = Height of the tops of the trees above the ground
Crown Depth = Width of Upper Part of Canopy
Roughness of Outer Canopy = Variability of heights of the tops of the trees

Canopy Closure $\sim \frac{\text{Ground Return Energy}}{\text{Total Return Energy}}$

