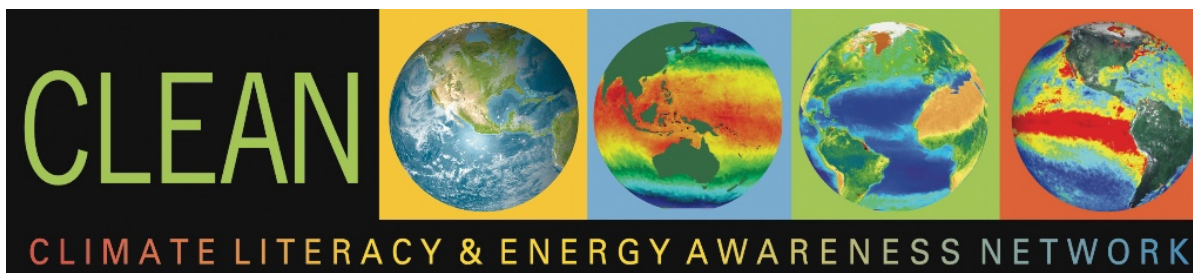
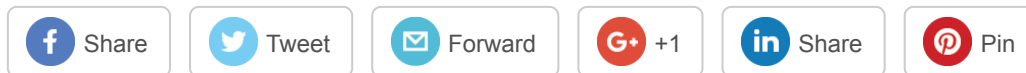


[View this email in your browser](#)



Register for the New CLEAN Webinar Series!

[Arctic Sea Ice Video](#) | [Disappearing Sea Ice Activity](#) | [Sea Ice Melt In the News](#)

CLEAN STEM Flash

A Timely Climate and Energy E-Learning Series to Use and Share

Topic: Arctic Sea Ice

What caused this year's extremely mild winter in the Arctic?

CLEAN Resource Feature

Video: [A New Climate State: Arctic Sea Ice 2012](#)

This video from Yale Climate Collections gives a brief overview of how sea ice coverage has changed from the 1980s to 2012.

Video length: 6:39 min.

Find more resources on [ice melt](#) in the CLEAN Collection.

Previously, arctic sea ice was at its lowest in the summer of 2012. This year, that may change. This video shows, through



has changed over the past 35 years.

CLEAN Resource Feature

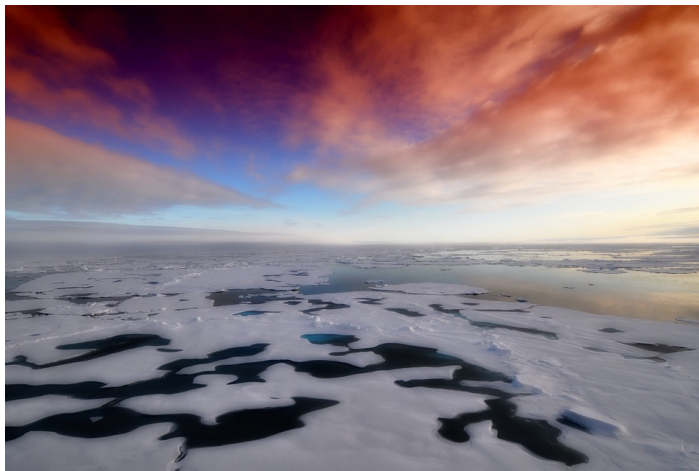
Activity: [Whither Arctic Sea Ice?](#)

In this class activity, students work side-by-side with a real scientist to examine a case study involving real data on disappearing arctic sea ice.

Activity length: a week's class time, can be considerably shortened. Requires computer and Internet access for each small team of students.

Find more activities about the [albedo effect](#) here!

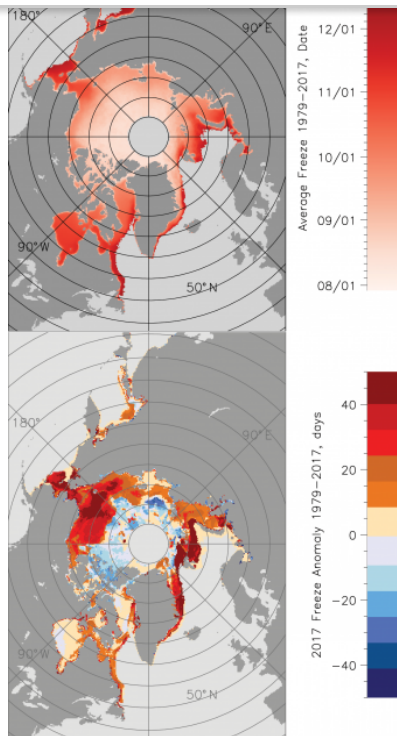
This activity from the National Snow and Ice Data Center is a clearly structured and engaging way to get students to interact directly with real data sets. Take a look at the Teaching Tips section for suggestions on how to integrate this activity into your classroom.



Climate & Energy in the News

A new report from the National Snow and Ice Data Center shows that arctic sea ice has reached its [second lowest](#) minimum extent on satellite record.

Ice cover in the Antarctic has also hit its [second](#)



These graphs show the average Arctic Ocean ice freeze-up dates for 1979 to 2017 (top) and the number of days that freeze-up occurred earlier or later than average (bottom). Cool colors in the bottom graphic indicate earlier than average freeze-up, while warm colors indicate later than average freeze-up.

Explore the **CLEAN** collection of climate & energy learning resources

CLEAN supports teaching and learning about climate and energy with 650+ free peer-reviewed, scientifically accurate, and classroom-ready resources.

[Browse](#) the CLEAN collection by NGSS topics.

Check out the [CLEAN STEM Flash Library](#) of past issues.

Received this as a forward? [Sign up](#) to get future issues sent to your inbox.

Like CLEAN 



CLEAN is funded by grants from the [National Oceanic and Atmospheric Administration](#) (NA12OAR4310143, NA12OAR4310142), the [National Science Foundation](#) (DUE-0938051, DUE-0938020, DUE-0937941) and the [Department of Energy](#).

Any opinions, findings, and conclusions or recommendations expressed in this material are those of the author(s) and do not necessarily reflect the views of the National Science Foundation.

[unsubscribe from this list](#) [update subscription preferences](#)

