



PSECCO

Polar Science Early Career Community Office

PSECCO empowers early career scientists in the polar sciences by supporting a vibrant community, providing opportunities and sharing resources to work together towards a more just, inclusive, diverse, equitable and accessible polar science environment.



Photo credit: Jason Briner

PSECCO Welcomes New Advisory Board Members!

This June PSECCO welcomed five new advisory board members to the team, who will be providing strategic guidance to help shape PSECCO activities that support the early career polar science community and serving on PSECCO selection committees. Get to know the new advisory board members on the ['Team' page of the PSECCO website!](#)

A huge thanks goes out to all of the early career scientists who put time and effort into applying for the advisory board roles. We wish we could have supported all of you and hope you will engage in the office in other ways!

Upcoming Events / Opportunities

PSECCO Early Career Social Hour

June 29, 2022

[10am AK/12pm MT/2pm ET](#)

Join other polar early career scientists from all over, to connect, network, & build community at PSECCO's Early Career Social Hour in the fun virtual world of 'Topia'!

Topia is an interactive and unique way to connect with others remotely, in a virtual setting built specifically for this PSECCO Social Hour. Sit and chat with other polar scientists who do science where you do, or move to gather with other folks chatting around a campfire. The cool thing about this world is that you decide who you chat to and where you go within it.

These socials will be held monthly on the last Wednesday of every month, so if you can't make this one, come to the next!

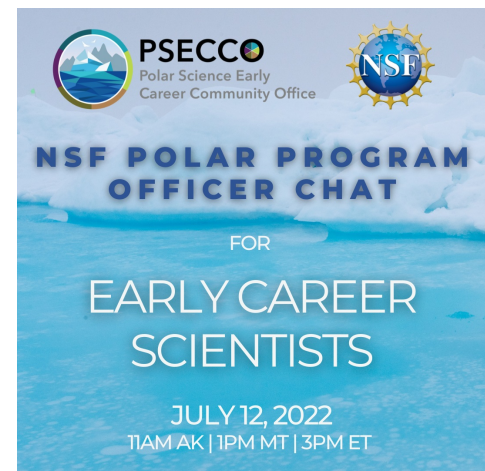


PSECCO / NSF Polar Program Officer(s) Chat for Early Career Scientists

July 12, 2022

[11am AK/1pm MT/3pm ET](#)

PSECCO invites you to attend a call with National Science Foundation Office of Polar Programs (OPP) program managers, specifically designed for early career polar scientists. Attend to meet OPP Arctic and Antarctic program officers, learn the basics behind what program managers do, how they can be helpful, and to ask them questions about the funding/application process!



Join the PSECCO Community Slack Channel!

Are you a polar early career scientist looking to make informal connections, ask questions about polar science papers or data, plan meet-ups at conferences & more with other early career folks? [Join the PSECCO Community Space on Slack!](#)

Don't see a channel for what you'd like to connect with the community about? Let [PSECCO](#) know and we can make space for it or direct you to the best channel to post in!



Learn how ECRs can use the PSECCO community Slack!

Quick guide to using the PSECCO community Slack channels:

* ask questions you might have about various polar-related topics (e.g., data sources, coding, papers, etc.) in the **#ask-anything** channel

☐* use the **#coffee-and-donuts** channel to connect over coffee, tea, water and/or donuts with other early career scientists in the PSECCO community! Folks in the channel will be randomly matched every two weeks with someone new.

☐ build community, share opportunities and get to know other polar early career scientists in the **#community** channel

☐ use the **#resource-requests** channel to query the broader community for resources, data, code, GIS layers, papers, places to find ship-space, and more. This is a place to help others and to be helped!

☐ organize meet-ups with other polar EC scientists at conferences, meetings and workshops in the **#conferences** channel

☐ introduce yourself to the wider polar early career community in the **#welcome** channel.

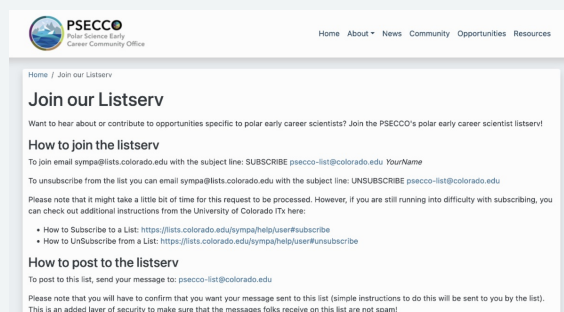
☐ inspire use of the Slack in other ways too, as the space is to be useful to YOU as polar early career scientists. If you have an idea for a new channel and want it set up, let PSECCO know, and we can make it happen.

Interested in the above? [Join the PSECCO Community Space on Slack!](#)

PSECCO Resources

Would you like to see more opportunities for you as a polar early career scientist or to share some? Sign up to the PSECCO Listserv, a lightly moderated listserv where anyone in the polar community can share conference opportunities, post jobs, ask questions and directly engage with this group.

**Sign up to or post on the
PSECCO Listserv**



Share your input on how PSECCO can best serve the polar early career community using [this linked form](#).



PSECCO Community Input

The Polar Science Early Career Community Office (PSECCO) is here to meet the needs and amplify the efforts of early career scientists in the polar community. To effectively do that, we would love to hear from you.

Please share answers to any or all of the following, so that we can better understand individual and collective needs within the community. Please note that this feedback is anonymous, unless you choose to share your information.

[Sign in to Google](#) to save your progress. [Learn more](#)

What ideas do you have for PSECCO to best support, elevate and amplify the work and ideas of early career polar scientists?

Your answer

Fill out the polar early career scientist input form!

Connect with us [via email](#) or on [Twitter](#):



The Polar Science Early Career Community Office (PSECCO) is a community-building and community-support organization for polar early career scientists, funded by National Science Foundation Office of Polar Programs Award #2135176.

Received this as a forward? Sign up to get future issues sent to your inbox.